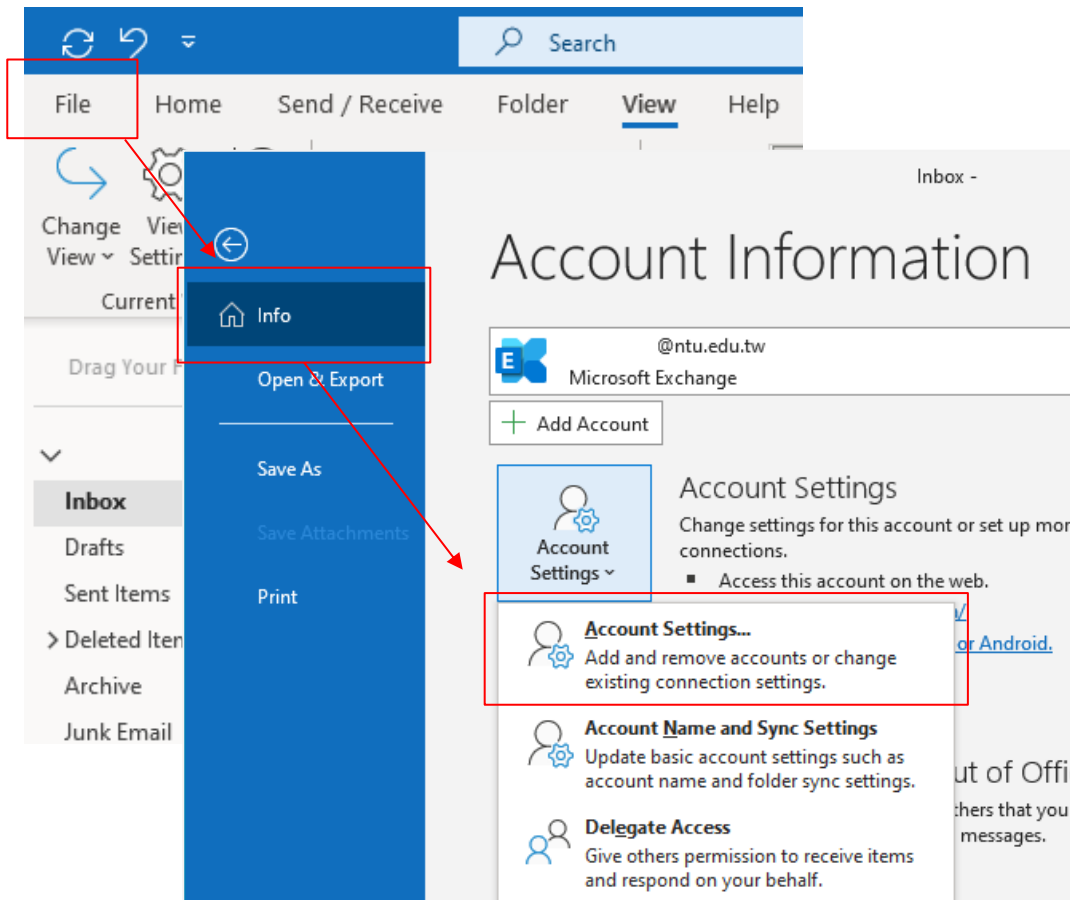
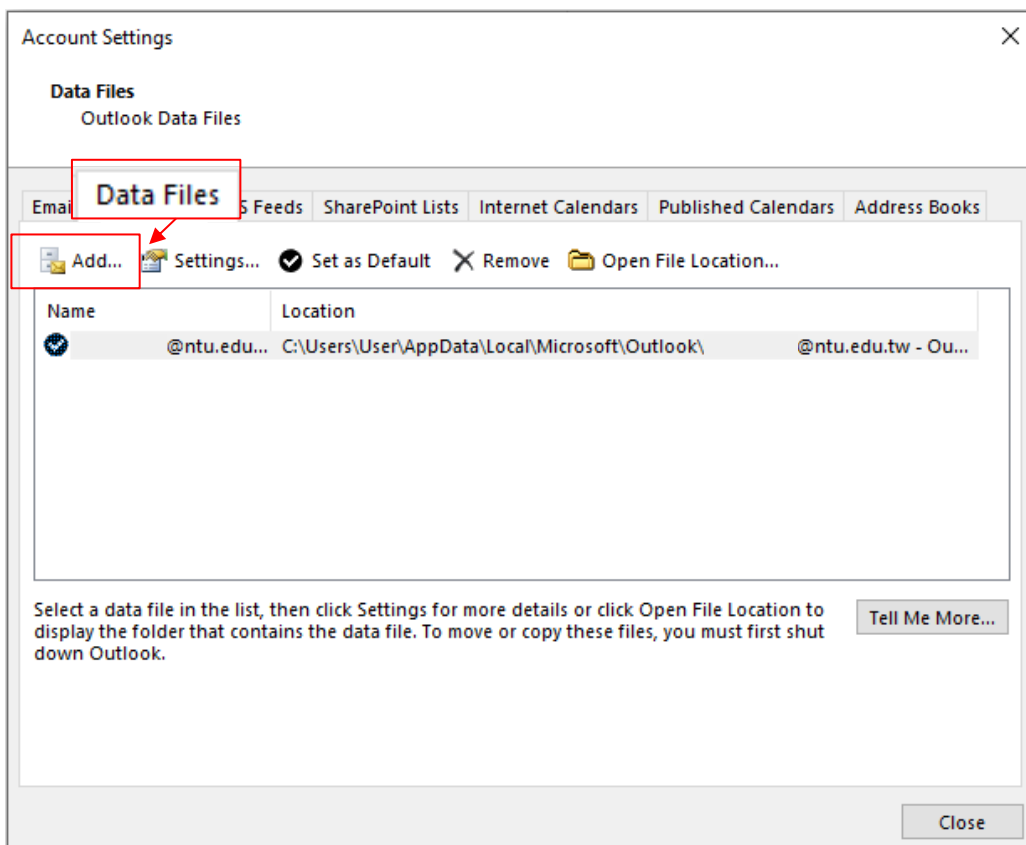


# Move emails to back up on your local computer

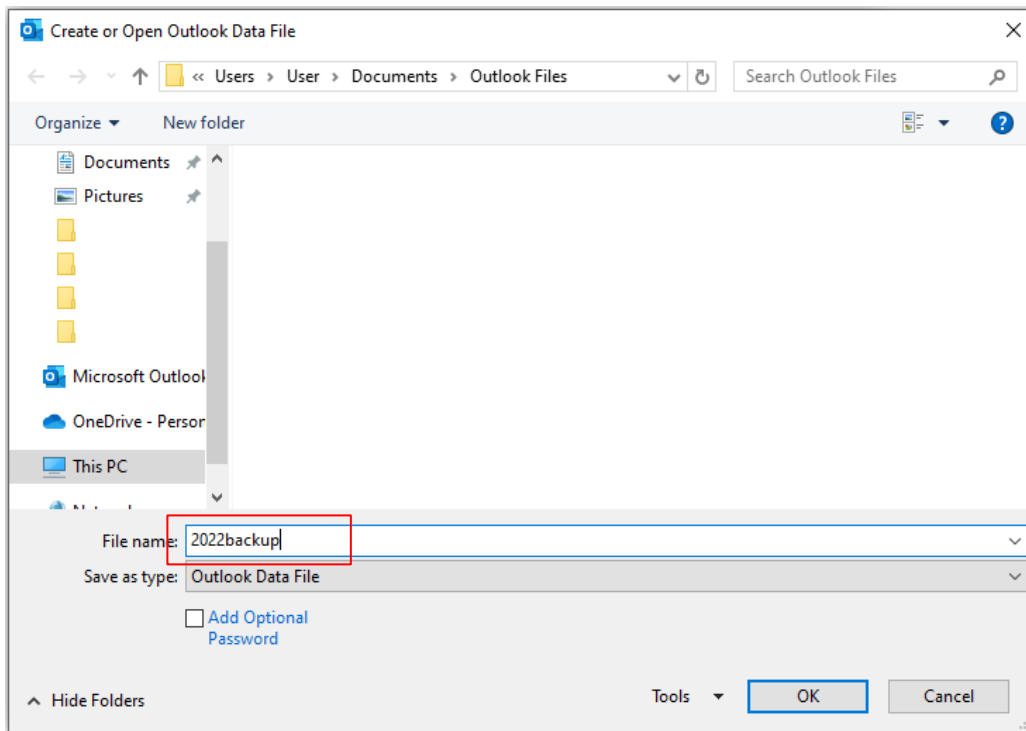
1. Please click **【File】** → **【Info】** → **【Account Settings】** .



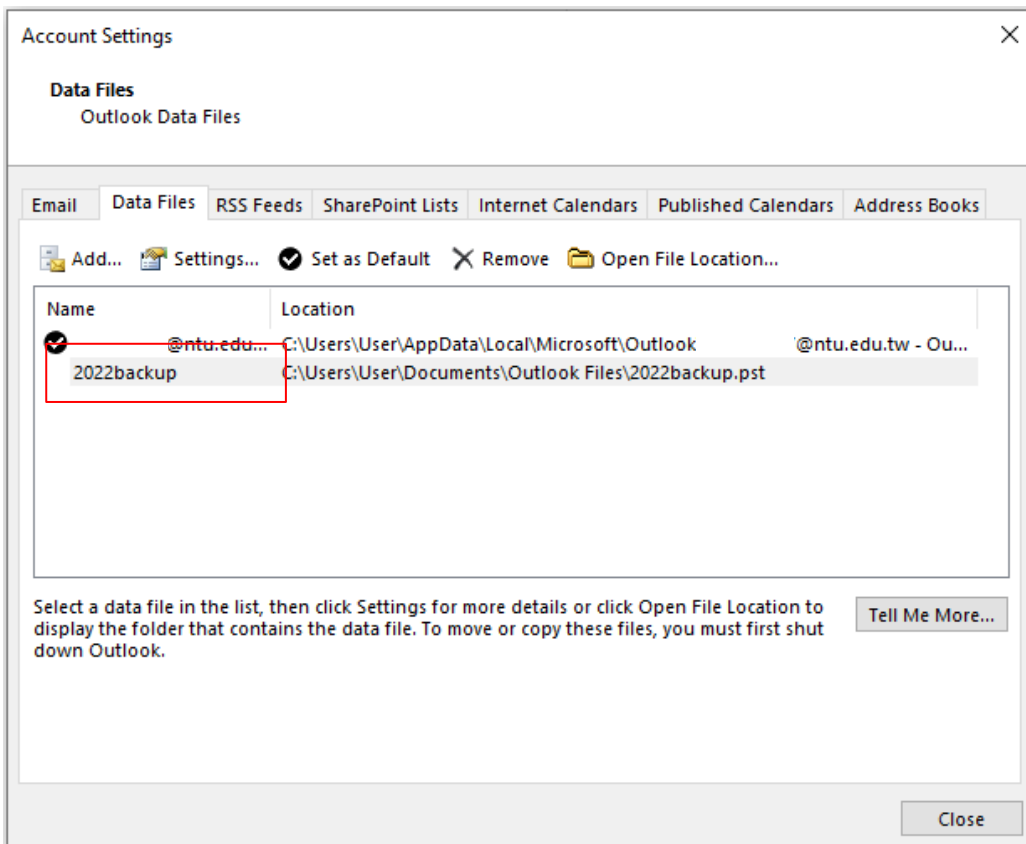
2. Click **【Data Files】** → **【Add】** .



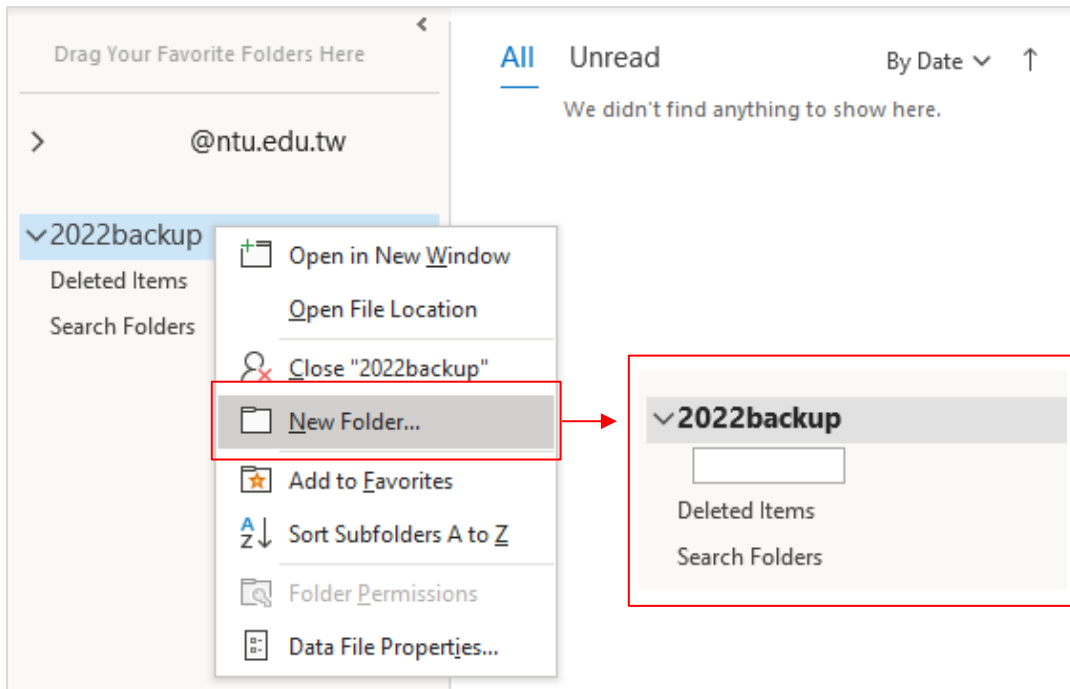
3. Set the storage path for the data file, name the file, then click **【OK】** .



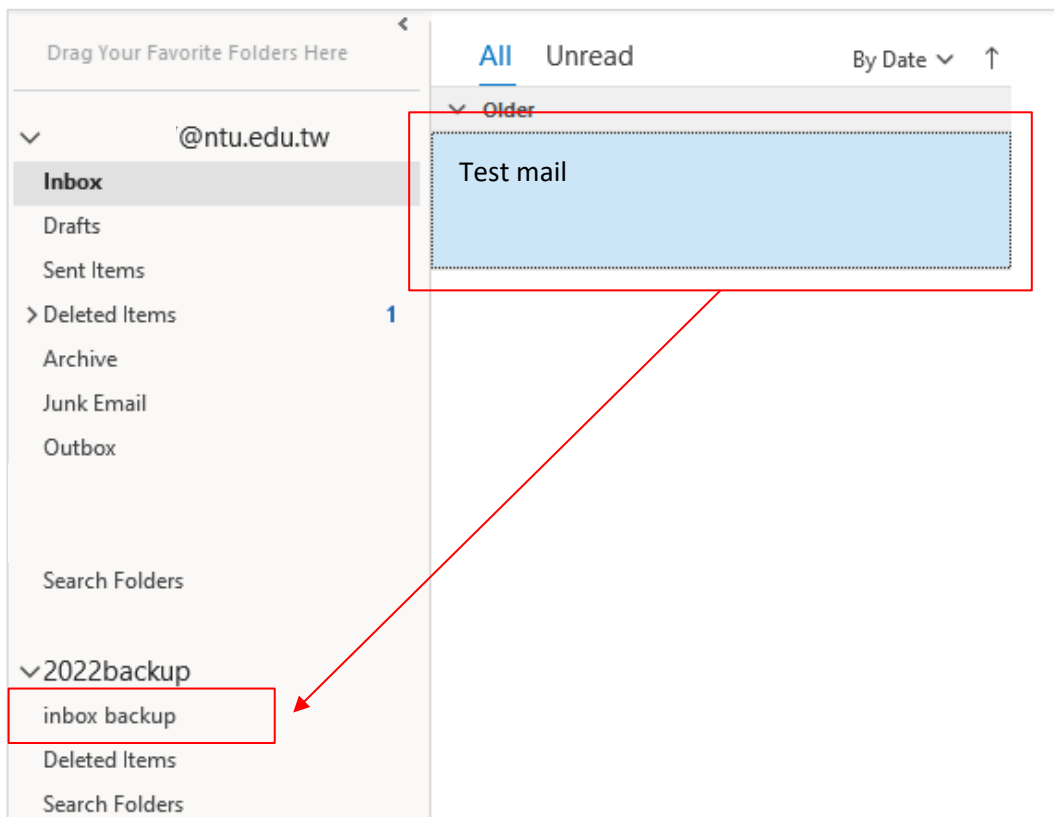
4. After confirming that the data file has been added, click **【Close】** .



5. On the left side, locate the newly created data file, right-click on it, then select **【New Folder】** → Enter the folder name.



6. Click and drag email to the folder.



Tips :

1. Hold down **【ctrl】** and click, you can select multiple emails at once.
2. Hold down **【shift】** and click, clicking the first and last emails lets you select multiple emails consecutively.