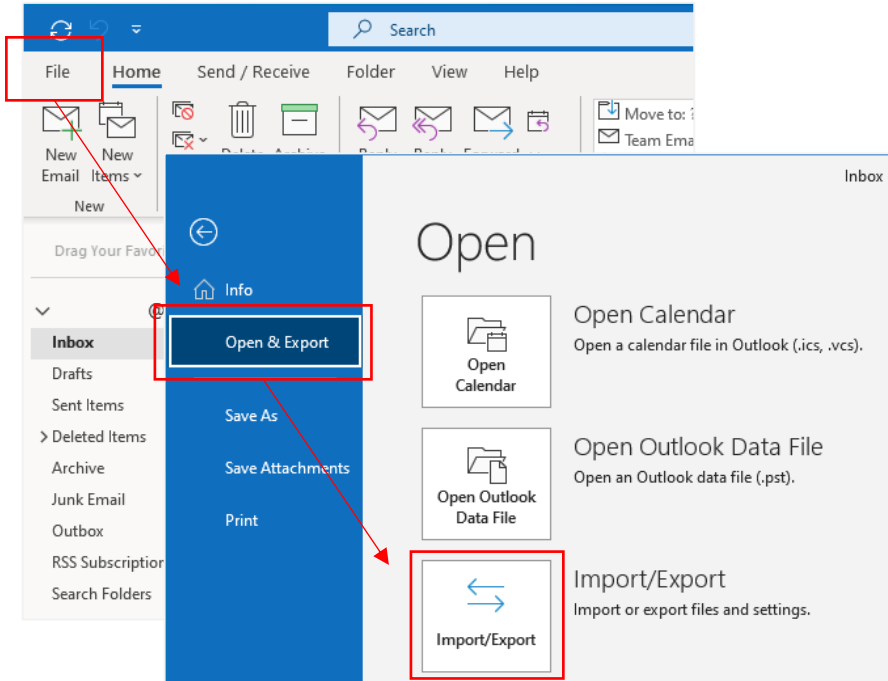


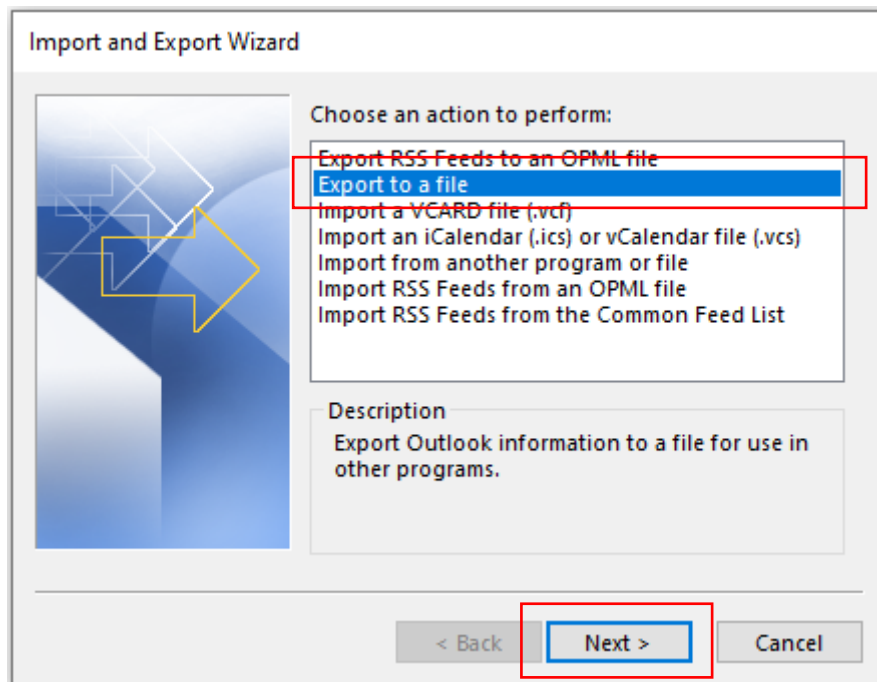
Export and import contacts

Export Contact Procedures :

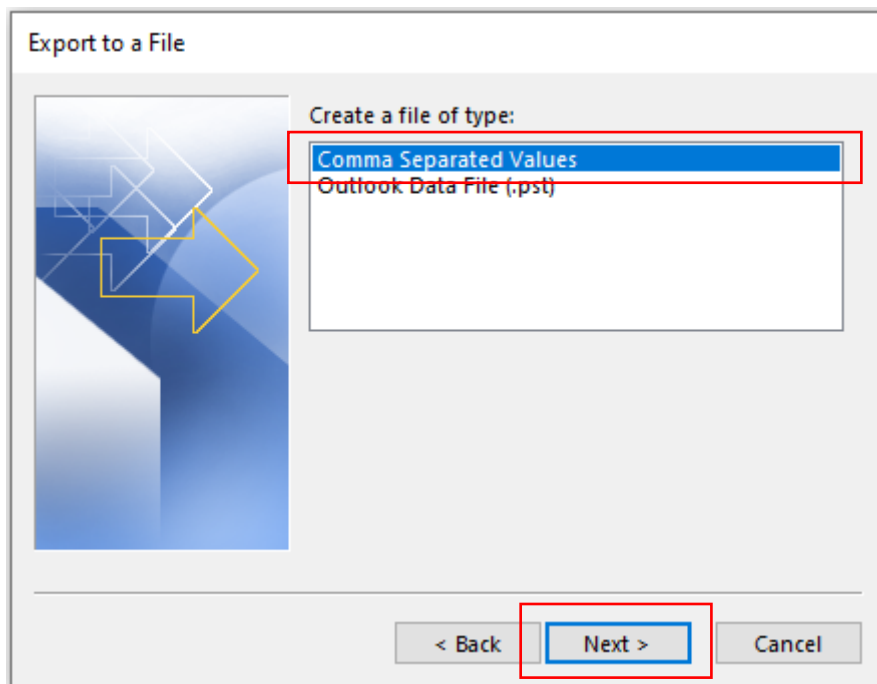
1. Please click **【File】** → **【Open & Export】** → **【Import/Export】** .



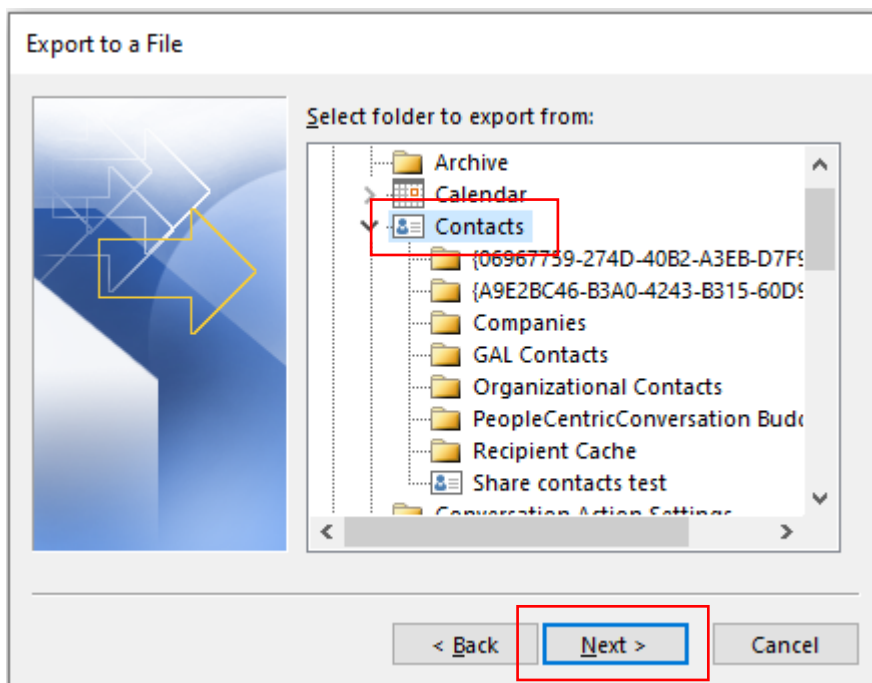
2. Select **【Export to a file】** , and click **【Next】** .



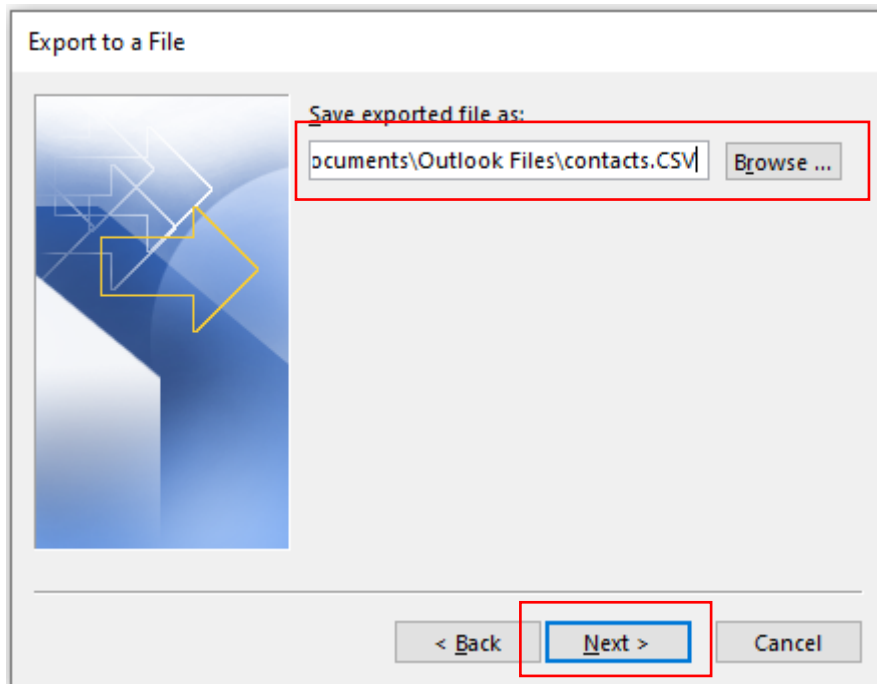
3. Select **【Comma Separated Values】** , and click **【Next】** .



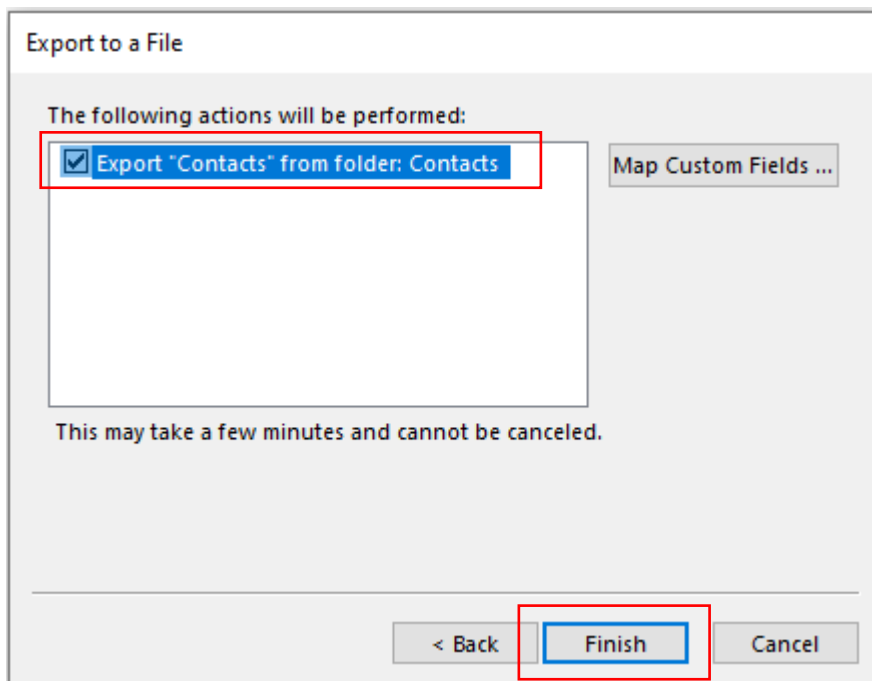
4. Select folder to export form **【Contacts】** → **【Next】** .



5. Select the location to export the file by clicking **【Browse】** ,
then click **【Next】** .

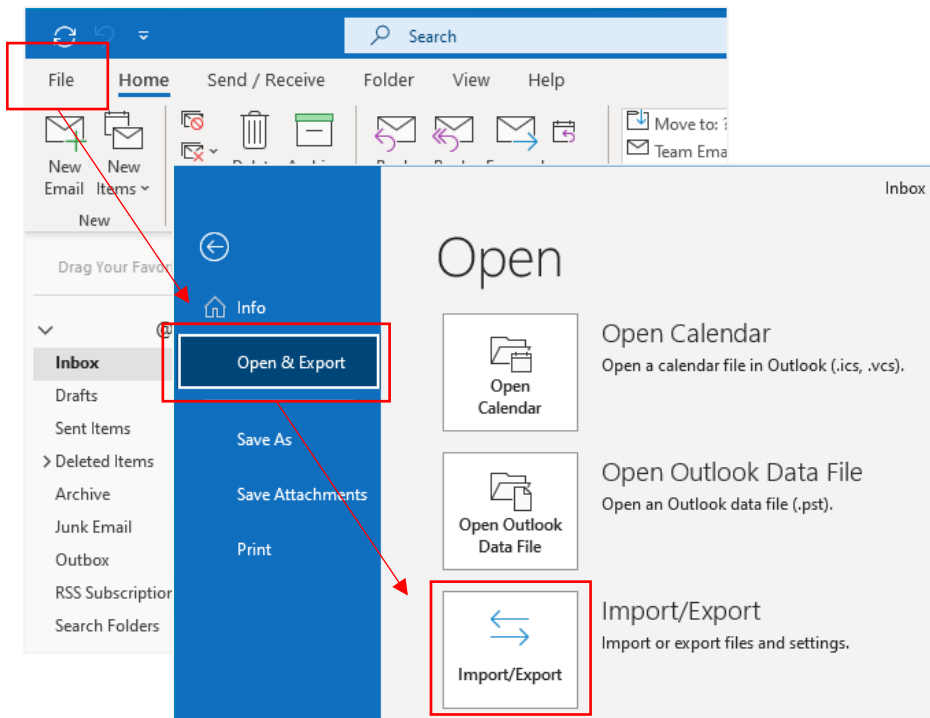


6. Export to a file, click **【Finish】** .

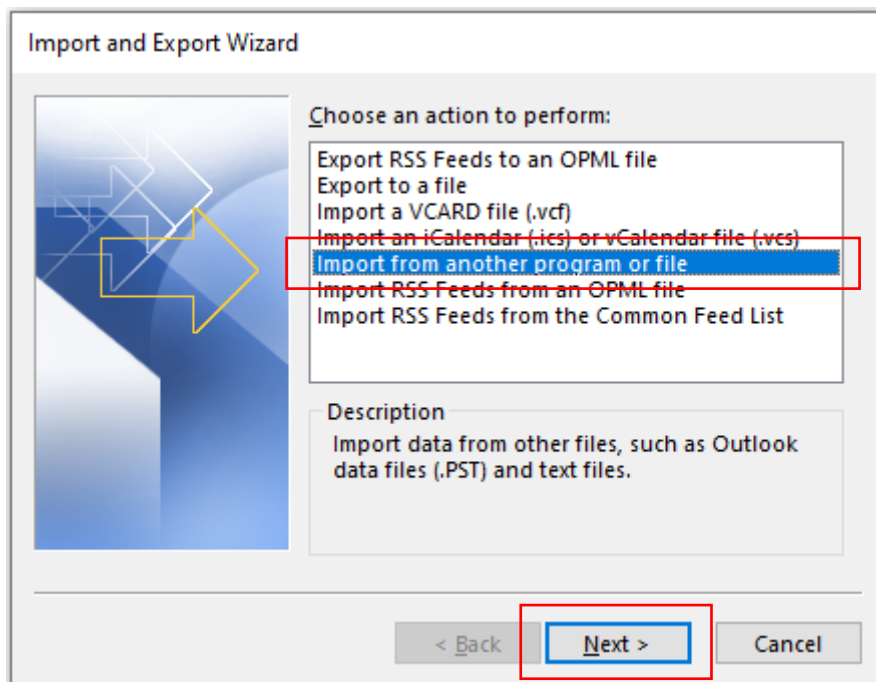


Import Contact Procedures :

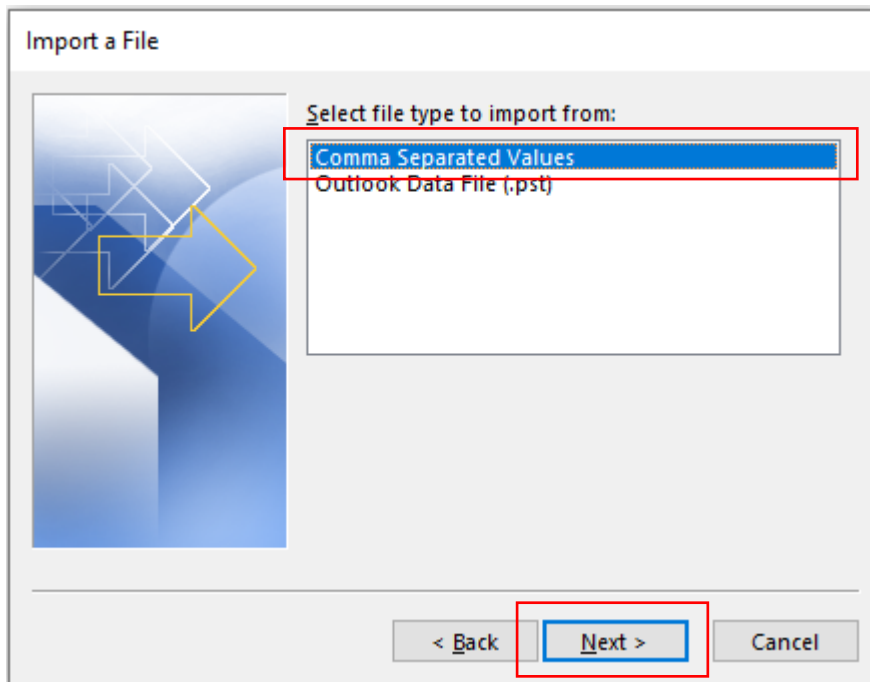
1. Please click **【File】** → **【Open & Export】** → **【Import/Export】** .



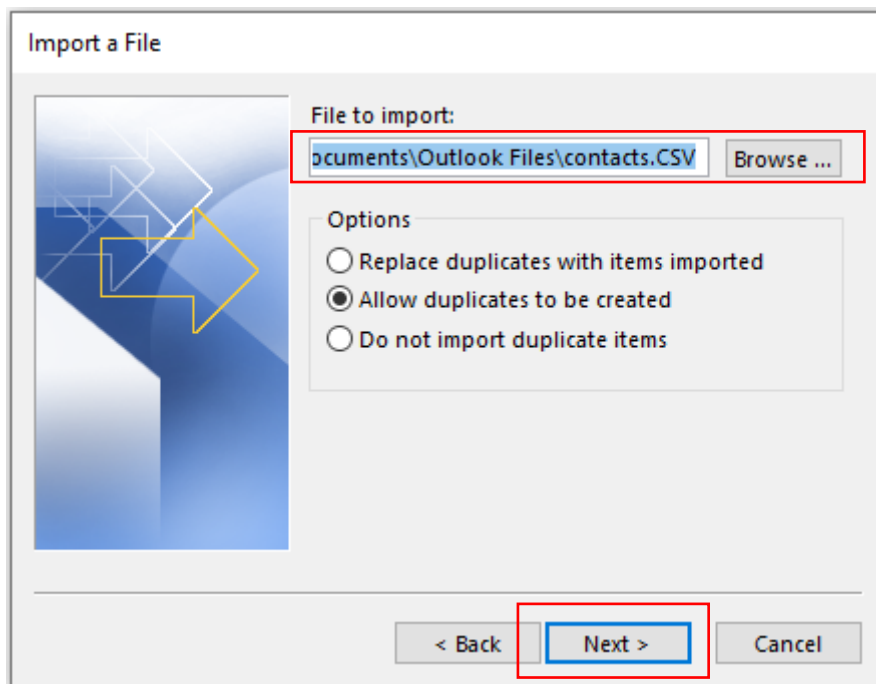
2. Select **【Import from another program or file】** , and click **【Next】** .



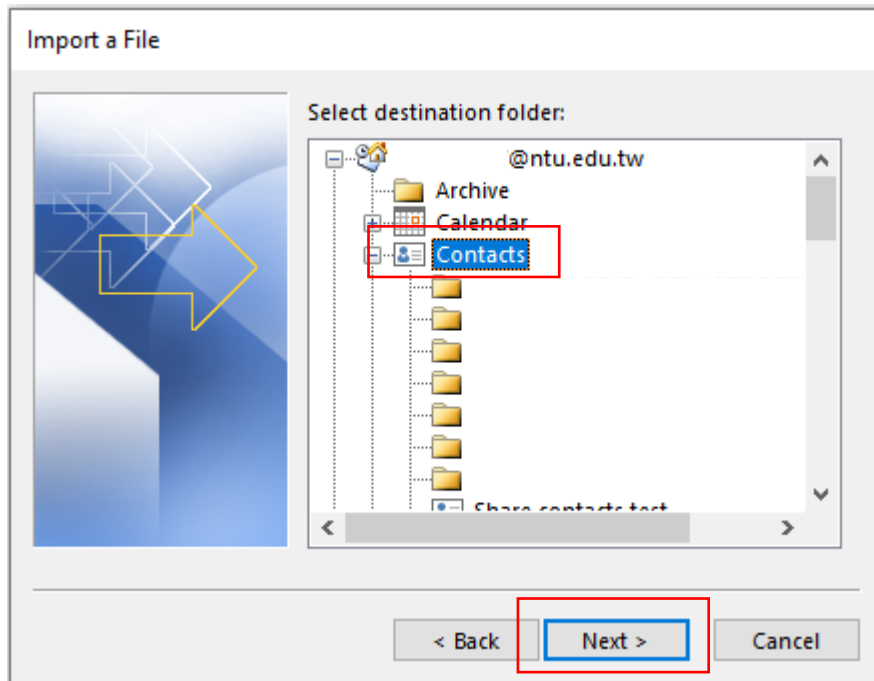
3. Select **【Comma Separated Values】** , and click **【Next】** .



4. Select the location to import the file by clicking **【Browse】** ,
then click **【Next】** .



5. Select folder to export form 【Contacts】 → 【Next】 .



6. Import into a file, click 【Finish】 .

